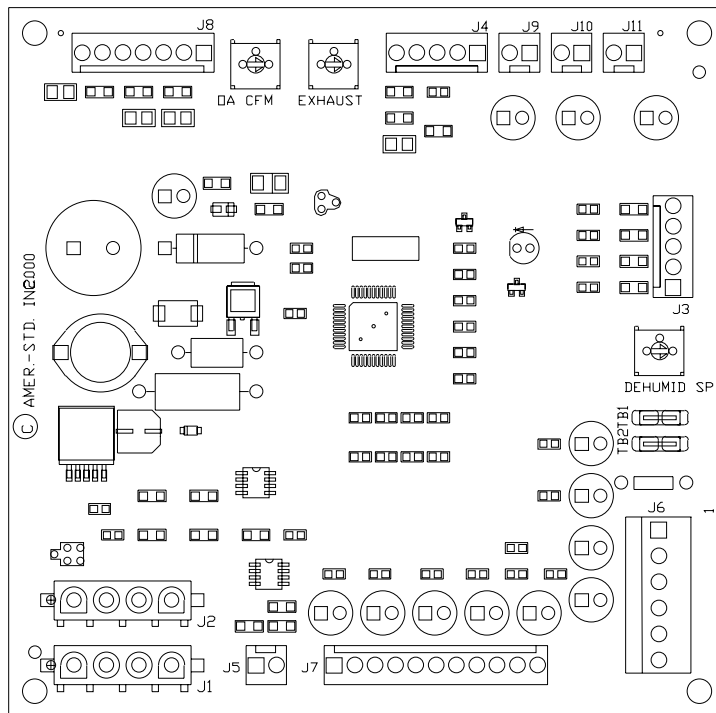


Installers Guide

Options Board

Used with 3 - 10 Ton Packaged Units with ReliaTel™ Controls



Models:

BAYABRD001C

Used With:

TH/YHC036A*R-120A*R
TS/YSC036A*R-120A*R
WSC036A*R-120A*R
TS/YSC036E-060E*R
WSC036E-060E*R

Installation

NOTICE:

Warnings and Cautions appear at appropriate sections throughout this manual. Read these carefully.



WARNING – Indicates a potentially hazardous situation which, if not avoided, could result in death or serious injury.



CAUTION – Indicates a potentially hazardous situation which, if not avoided, may result in minor or moderate injury. It may also be used to alert against unsafe practices.

CAUTION – Indicates a situation that may result in equipment or property-damage-only accidents.

General

RTOM – ReliaTel™ Options Module

The RTOM monitors the supply fan proving, clogged filter, supply air temperature, exhaust fan setpoint, supply air tempering, frostat™ and smoke detector. Refer to system input devices and functions for operation.

Note: The Options Module board will be denoted on the unit wiring diagrams as RTOM.

Inspection

1. Unpack all components of the BAYABRD001C kit.
2. Check carefully for any shipping damage. If any damage is found it must be reported immediately and a claim made against the transportation company.

Parts List

- 1 - RTOM Options Module
 - 1 - Wiring Harness (4366-1172)
 - 1 - Wiring Harness (4366-1145)
 - 1 - Mounting Screw
-
- 1 - Mounting Bracket
 - 2 - Mounting Screws

Installation



WARNING Hazardous Voltage!

Hazardous Voltage w/Capacitors! Disconnect all electric power, including remote disconnects and discharge all motor start/run capacitors before servicing. Follow proper lock-out/tagout procedures to ensure the power cannot be inadvertently energized. Verify with an appropriate voltmeter that all capacitors have discharged. Failure to disconnect power and discharge capacitors before servicing could result in death or serious injury.

1. Remove supply fan access panels from the front of the unit.
2. Install the RTOM to it's mounting bracket with 1 screw. Refer to Figure 1.
3. Install the RTOM and bracket assembly to the unit. Refer to Figure 1.
4. Disconnect plug 5P1 and 5P2.
5. Connect wire harness (4366-1172) provided in kit to RTOM J1.
6. Connect plug 5P1 to the other end of wire harness 4366-1172.
7. If unit has an economizer, connect plug 5P2 to RTOM J2.

Note: Units without an economizer, Do Not connect plug 5P2 to RTOM J2

8. Connect wire harness jumper (4366-1145) to RTOM J3 - 1 & 2. Refer to Figure 2 for pin location.

Note: Step 6 disables Supply Air Tempering. To enable Supply Air Tempering, remove wire harness jumper (4366-1145). Unit must be equipped with a Discharge Air Sensing Kit for Supply Air Tempering to operate.

Installation

Figure 1

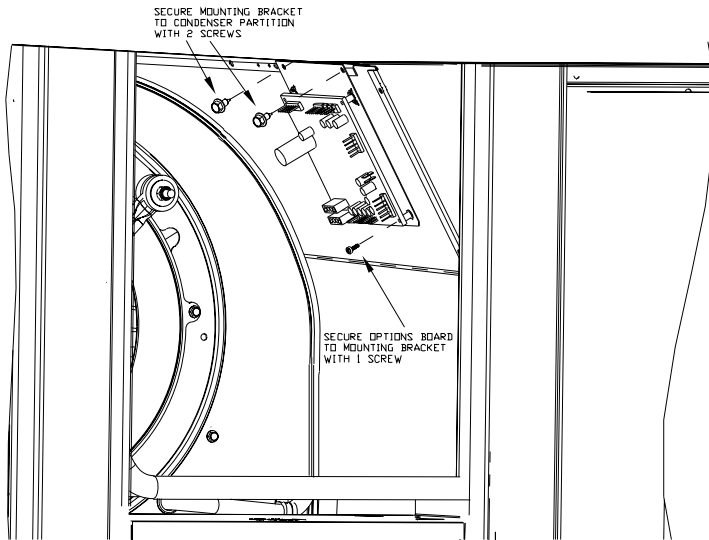
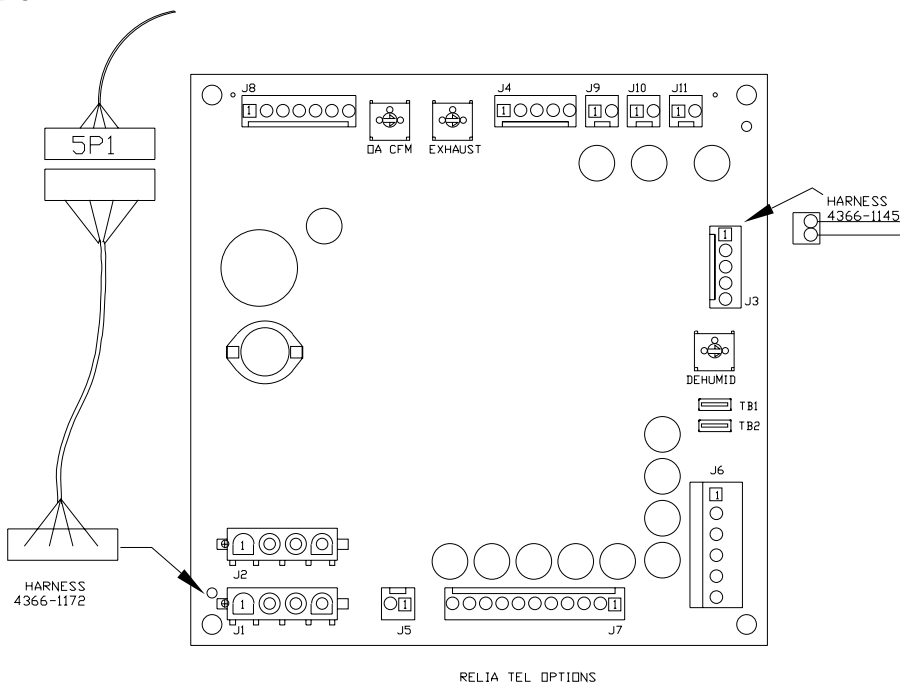


Figure 2





Literature Order Number	ACC-SVN05D-EN
File Number	SV-UN-ACC-ACC-SVN05D-EN 12/05
Supersedes	ACC-SVN05C-EN
Stocking Location	Webb Mason

The manufacturer has a policy of continuous product and product data improvement and reserves the right to change design and specifications without notice.